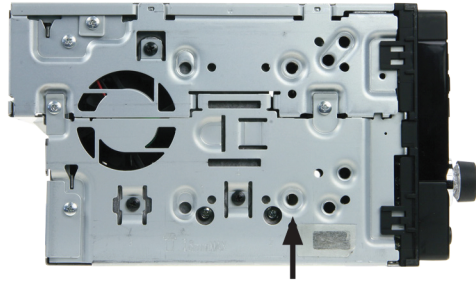
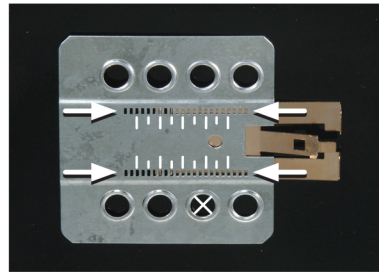


**Mercedes E-Class (W211) 2002 - 2009**

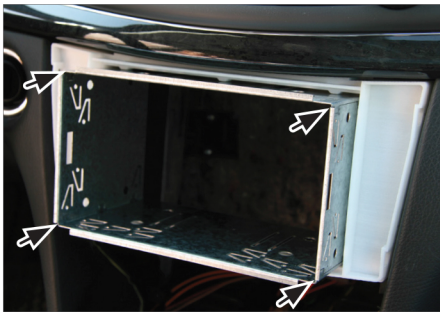
Compatible with double DIN devices



Mount the metal brackets with the double DIN head unit



The position of the copper coloured holder can be adjusted to your needs for perfect fit. (see sample)



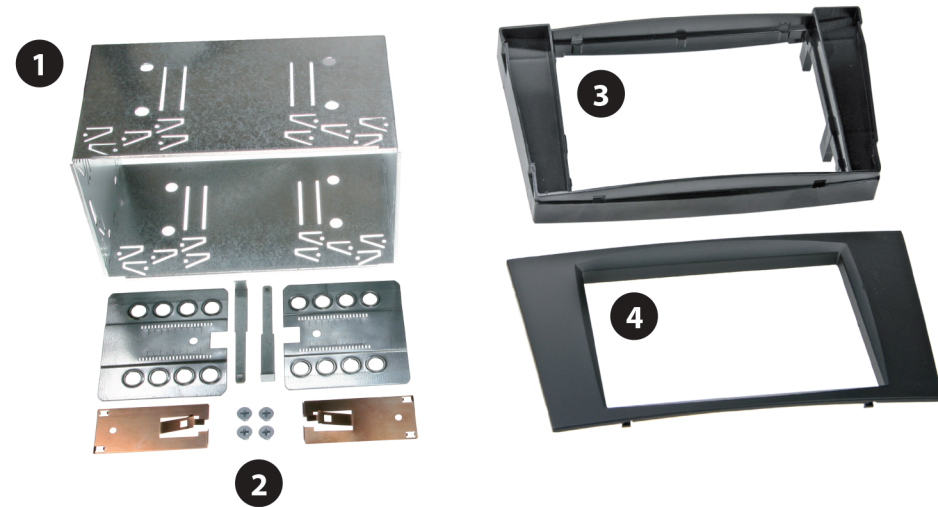
7. Push the metal frame into the mounting bracket

Connect all required circuit points  
 Push the Navigation into the metal frame until it snaps in.



8. Push the facia plate onto the mounting bracket

Reinstall everything in reverse order to finish installation.



Double DIN Set contents

- (1) Metal Frame
- (2) Installation Kit
- (3) Mounting Bracket
- (4) Facia Plate



1. Mercedes E-Class with OEM head unit

**Facelift models 2007 upwards:**  
After Replacing the OEM head unit it is not possible to use the pocket underneath the radio anymore.

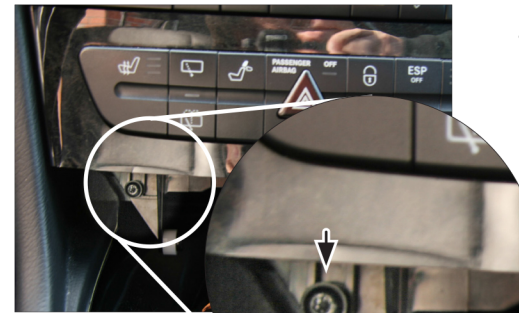


2. Pull up the gear shift cover

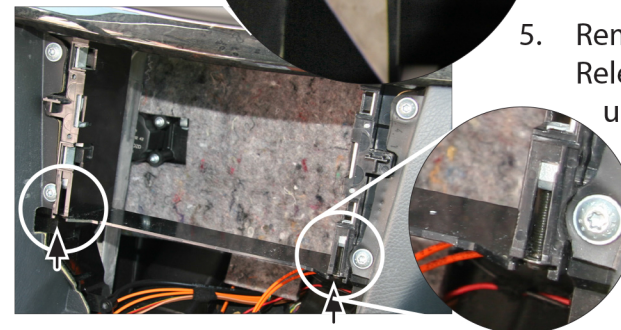
Unclip the gear shift panel and remove it



3. Open the ash tray and remove the complete ash tray unit



4. Remove the control unit / or CD- Changer underneath the OEM radio by removing the screws at left and right side



5. Remove the OEM head unit  
Release the two screws (see arrows) underneath the radio first - then pull out the OEM head unit



6. Place the mounting bracket on the dashboard

Fix the mounting bracket with the two screws (see arrows) at the left and right side under the mounting bracket holder