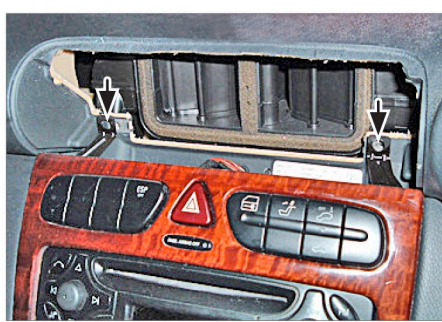


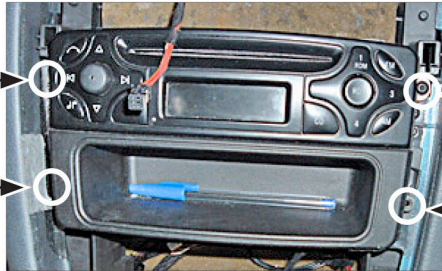
CT23MB02A

• Mercedes C-Class (W203) → 2004

Compatible with double DIN devices



8. Remove the centre panel



9. Remove the four Torx screws (2 on each side) holding the OEM head unit.

Remove the OEM head unit.



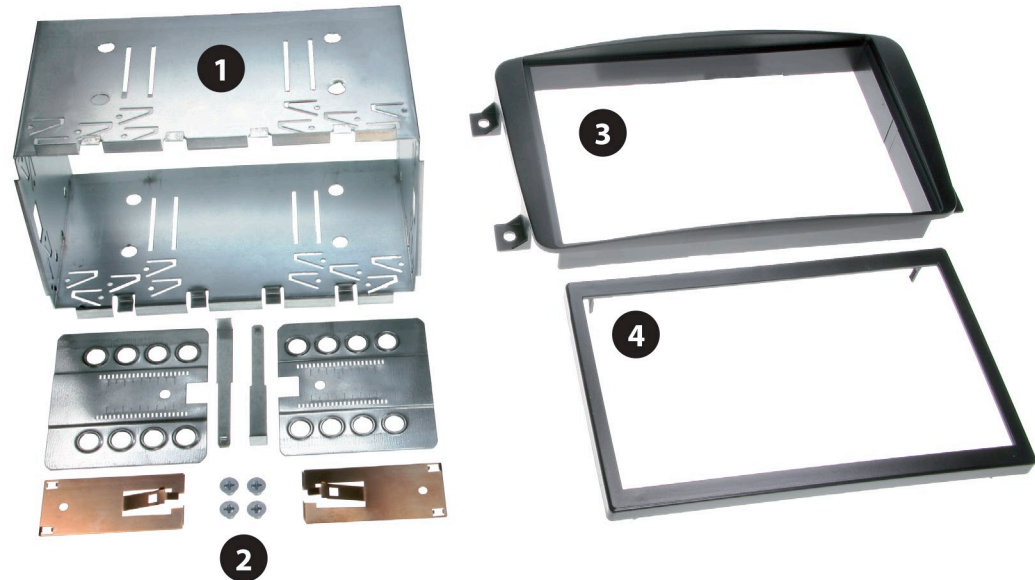
10. Place the fascia plate and fix it with the 4 original screws.

Push the metal frame into the fascia plate.

Connect all required circuit points and push the double DIN head unit until it snaps in.

Place the trim frame.

Reinstall everything in reverse order to finish installation.



Double DIN Set contents

- (1) Metal Frame
- (2) Installation Kit
- (3) Facia Plate
- (4) Trim Frame



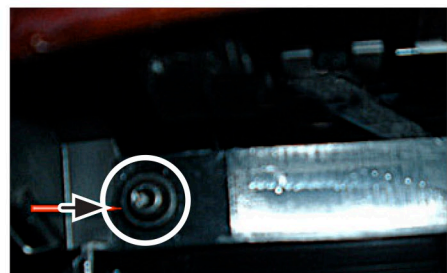
1. Mercedes C-Class with OEM head unit.



2. Remove panel by lifting it up.



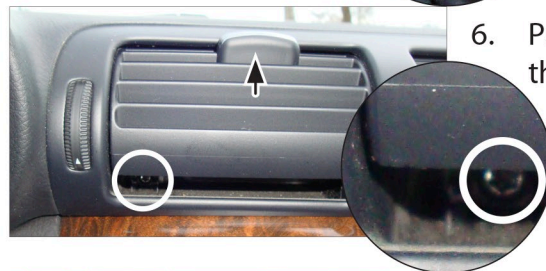
3. Remove the ash tray unit which is held by 2 clips.



4. Remove the 2 screws, located under the air condition control switches.



5. Unclip the air vent unit carefully on both sides with a screw driver.

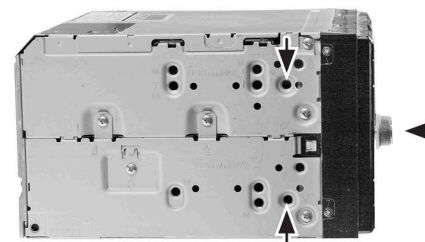


6. Pull up the air vent and remove the 2 screws (left and right) which become visible.

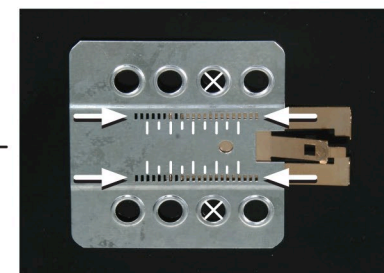


7. Pull down the air vent and unclip the whole unit at both sides carefully with a screw driver.

Remove the air vent unit.



(sample photo)



(sample photo)

Mount the metal brackets to the double DIN head unit.

The position of the copper coloured holder can be adjusted to your needs for perfect fit. (see sample)