



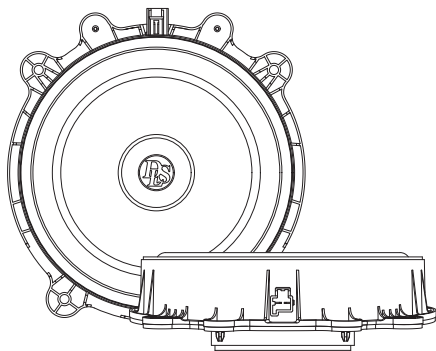
CRPP-TSW.8

User Manual

Tesla



CRUISE



Welcome to DLS!

Thank you for purchasing the DLS Cruise CRPP-TSW.8 woofer. For us, it's all about the sound experience. We care deeply about sound and construction quality. In order for your experience to be as optimal as possible, it is important that you fully read this manual, preferably before you start your installation. Keep the manual in a safe and accessible place for future reference.

Your speakers must be installed correctly in order to work as intended. Make sure you have all necessary tools nearby before starting and that you are completely confident in how to proceed. If you feel the slightest uncertainty; feel free to take the help of an experienced installer or a car audio dealer.

Warranty

This woofer is covered by warranty, depending on the conditions in the country where it is sold. If the speaker is returned for service, please include the original dated receipt with the product.

DECLARATION OF CONFORMITY

DLS plug and play speakers for vehicles are manufactured in accordance with the EU directive EEC 95/54 (72/245/EEC) and are marked with the approval number. They are also marked in accordance with the WEEE-directive 2012/19/EC. The products are also produced in accordance with the EU RoHS directive 2015/863/EU.

DLS CRUISE

CRPP-TSW.8

Content

Welcome	2
Parts Included	3
Pre-installation	3
General Info	3
Installation	3
Remove Door Panel	3
Remove Speaker	4
Mount DLS Speaker	5
Remount Door Panel	5
Run-in period	5
DLS Support	5
Specifications	6
Compatible Car Models	8
Disclaimer	8
Product Markings	9

DLS speakers are engineered by DLS Sweden,
a part of:

Winn Scandinavia AB

Idrottsvägen 37 - SE-702 32 Örebro - Sweden

Tel: +46 19 20 67 65 - E-mail: info@dls.se

www.dls.se

Designed & Sound tuned in Sweden.



Parts Included

Included products:

2pcs Woofers

Included accessories:

2pcs Stainless steel Cruise logo badges

2pcs Woofer connection cables

4pcs Adhesive foams for wrapping

4pcs Terminal crimp connectors

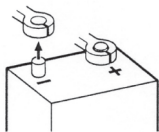
1pc Pry tool

1pc Manual

Pre-installation

Disconnect Low-Voltage Power (Tesla)

Before working on the doors, power the vehicle off via the Service/Power Off menu. Wait until systems shut down (a few minutes). If required by local safety practice, disconnect the negative terminal of low-voltage (12V/16V) battery.



Warning: Never touch or route cables near high-voltage (orange) harnesses. Do not open or modify any airbag/SRS connectors. Place the disconnected terminal in a secure and isolated location away from any possible connection belonging to the battery/power source system.

General Info

Before you start, make sure your vehicle uses the same speaker size/position as provided in this kit.

The installation process may vary depending on the car model, factory options and other factors. The approach is similar to all of the described car models. Some screws and clips may be placed differently and the course of action may vary.

Take care when removing panels, so there will be no marks. Use plastic pry tools to avoid marks on the panels and damaging the plastic clips.

Installation

Tools needed

- Bit-holder screwdriver
- Torx bits T25 / T30
- 8mm socket for hex-head screws
- Small flat head screwdriver
- Plastic pry tool (included)

Remove Door Panel

Disassemble the front door by removing the door panel cover.



Usually the clips/screws are placed by the white marks. This could vary depending on the vehicle.

Usually three screws are placed by the white marks (see below). This could vary depending on the vehicle. Two of the screws are located under the door handle.





The third screw is located behind the red reflector clip. Remove the reflector clip by using the included pry tool.



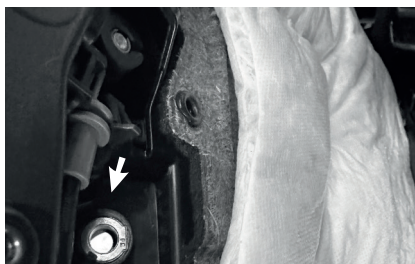
In most cases the screws that are used is of Torx type, use a tool bit T30 size. Unscrew them and store the screws in a safe place, for later use when reinstalling the door panel.

To remove the door panel, all clips need to be released. Loosen the door panel by inserting the pry tool between the panel and the door. Pry the door panel gently, but firm, outward to release the clips.



When the door panel is loose, start by softly lifting the panel straight up to remove it.

There are several electrical and mechanical connectors on the backside of the panel. Start with detaching the release cable from the lock mechanism.

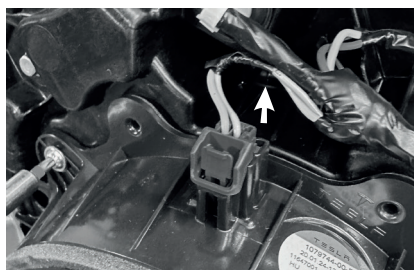


Hint: Some cables are not removable, leave the door panel resting on a soft ground surface.

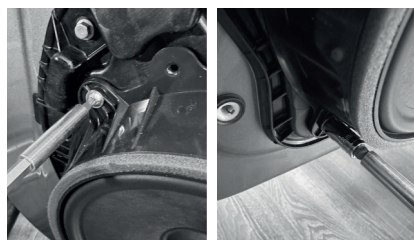


Remove Speaker

Release the green speaker connector.



Remove the speaker by unscrewing the OEM 8mm hex-head socket or T25 screws.



Use the pry tool to release the speaker from the door if it doesn't unclip easily.

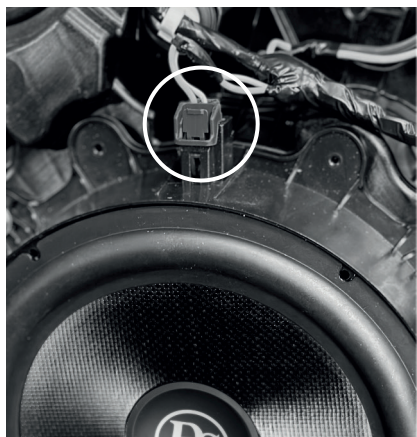


Mount DLS Speaker

Install the speaker to the door by using the OEM 8mm hex-head or T25 screws. Make sure the speaker is properly mounted and fits nicely.



Reconnect the speaker connector in the new DLS speaker.



Remount Door Panel

Start the reassembly of the door panels. Follow this manual in reverse order.

Reconnect all cables. Reconnect all electrical connectors and the unlocking device.

Place the door panel from the top at the window seal and lower it gently. Align all clips with their holes and press the panel firmly by hand to engage the clips. Refit and tighten all screws/bolts in their original locations. Ensure no wires are pinched and no clips/screws remain unused.

Hint!

Take care when installing the door panel, to make sure no wires get squeezed and/or pressed against the midrange speaker when it's installed in the door frame.

Run-in period

To ensure optimal performance from your woofers, it's essential to allow for a proper run-in period. Fresh out of production, the moving parts like spider and suspension in a speaker can be stiff. A bit of exercise is necessary. Once they've had a chance to settle, you'll notice an improvement in sound quality.

Plan to let them play for a minimum of 15-20 hours. This can be achieved using a tone sweep or simply by playing music until they reach their intended performance.

Once the run-in period is completed the woofers now provide a more natural and enhanced music experience.

DLS Support

For technical assistance, ask your car audio dealer where the product was sold or the distributor in your country. You can always contact the DLS Support in Sweden via e-mail: info@dls.se. For more information regarding DLS and our products, visit our website: www.dls.se. We follow a policy of continuous advancement in development. For this reason, all or part of specifications and designs may be changed without prior notice.



Specifications

DLS Cruise CRPP-TSW.8

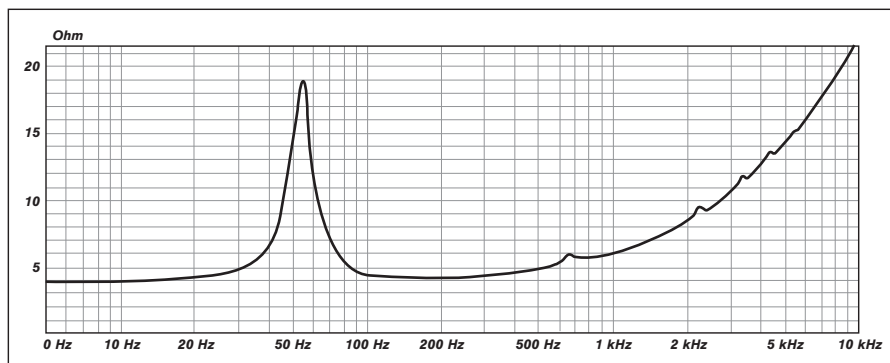
Technical Specifications

Size	8" / 200 mm woofer
RMS Power	120 W
MAX Power	240 W
Impedance	4 Ohm
Sensitivity	89.7 dB 1W/1m
Freq. range	45 Hz - 4500 Hz
Voice Coil Size	1.5" / 38 mm
Voice Coil Material	CCAW voice coil with Kapton® former
Basket	Glass Fiber Reinforced ABS
Magnet	Optimized hybrid neo/territe magnet
Cone	Glass Fiber
Suspension	Rubber

Electro-Acoustic Parameters

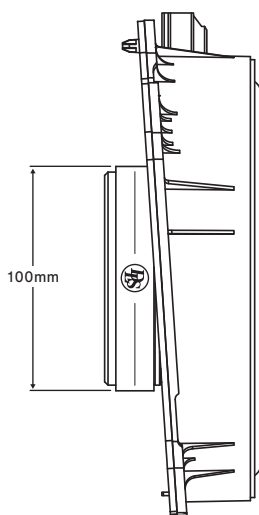
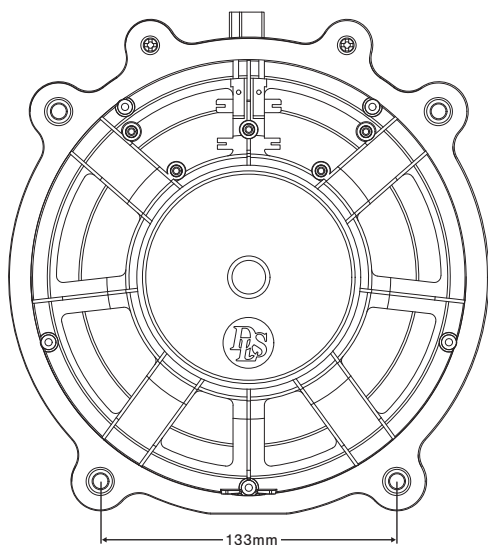
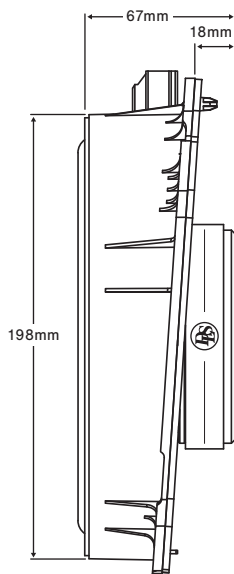
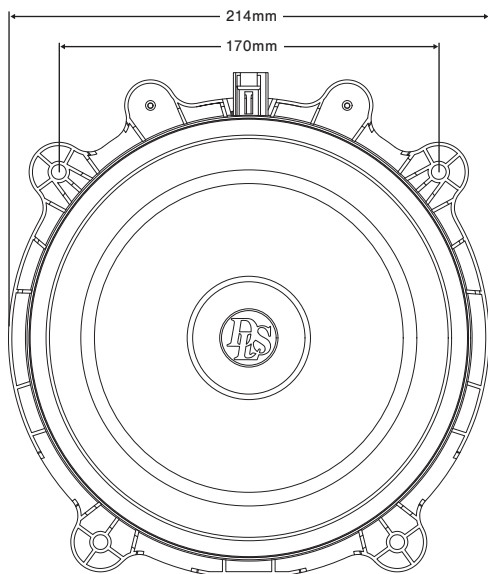
Re	3.8 Ohm
Fs	54.6 Hz
Mms	23.9 gr
Cms	0.36
Vas	32.8 L
Qts	0.68
Qes	0.89
Qms	2.88
Bl	5.80 T.m
Spl	89.7 dB 1W/1m
Sd	214 cm ²

Impedance vs. Frequency





Dimensions





Compatible Car Models

DLS Cruise CRPP-TSW.8

Make	Model	Year	Front speaker
Tesla	3	2018-2025	CRPP-TSW.8
Tesla	Y	2021-2025	CRPP-TSW.8

Disclaimer

Note! The factory sound system (for example speaker impedance) may in rare occasions be changed without prior notice from the vehicle manufacturer. If the factory speaker is below 2 Ohm or above 6 Ohm impedance, you should be cautious before installing your new speakers. The new speakers may not function properly, and can cause harm to the factory amplifier. For more information, visit www.dls.se or consult your local DLS dealer.



Product Markings



The crossed-out wheeled bin symbol means that the product, literature and packaging included must be taken to separate collection at the end of their working life. Do not dispose of these products as unsorted municipal waste: take them for recycling. For info on your nearest recycling point, check with your local waste authority.



This product has been granted with the CE certification mark to show that the product follows the health, safety, and environmental protection standards for products sold within the European Economic Area (EEA).



DLS products comply with the relevant provisions of the RoHS Directive for the European Union. In common with all Electrical and Electronic Equipment (EEE) the product should not be disposed of as household waste. Alternative arrangements may apply in other jurisdictions.



DLS is a global partner of the European Mobile Media Association, an organisation that focus on promoting the custom made mobile media installations to consumers.

We follow a policy of continuous advancement in development. For this reasons all or part of specifications & designs may be changed without prior notice. We reserve for possible typos, factual or numeric errors that may have been printed on any products, package designs, user manuals and/or other included accessories.



CRUISE