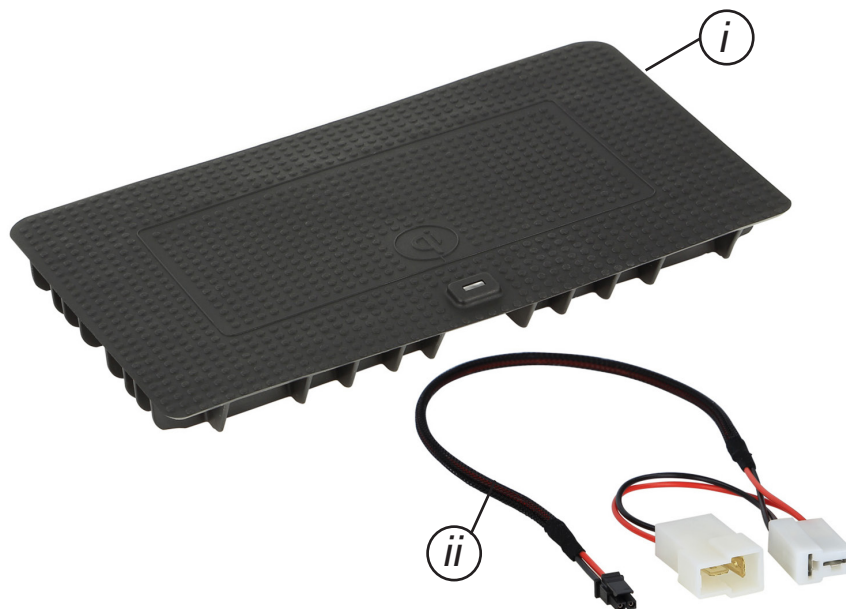




CTQIHY01 Wireless Charging Upgrade for Hyundai Vehicles

Gain the benefits of Qi Certified wireless charging in your vehicle with the installation of this wireless charging pad



i. Qi Charging Pad
ii. Connection Lead

APPLICATION

Note: Application data is subject to change at any time

Hyundai Tucson 2015>

RECOMMENDED TOOLS

- Panel Removal Tool
- Screwdriver

FEATURES

- Gain Qi wireless charging in your vehicle (for compatible devices)
- Easy to install
- Integrates seamlessly with the factory storage tray
- Qi Certified product

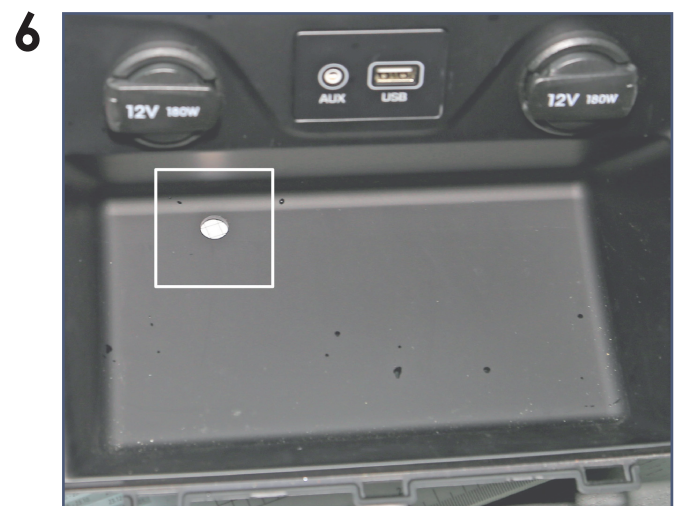
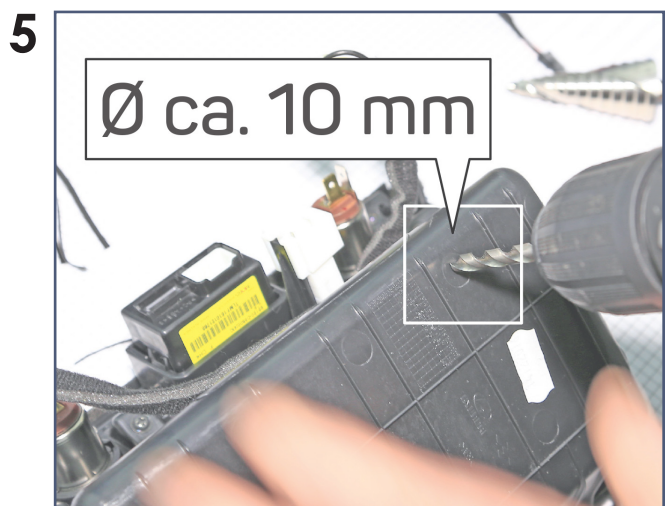
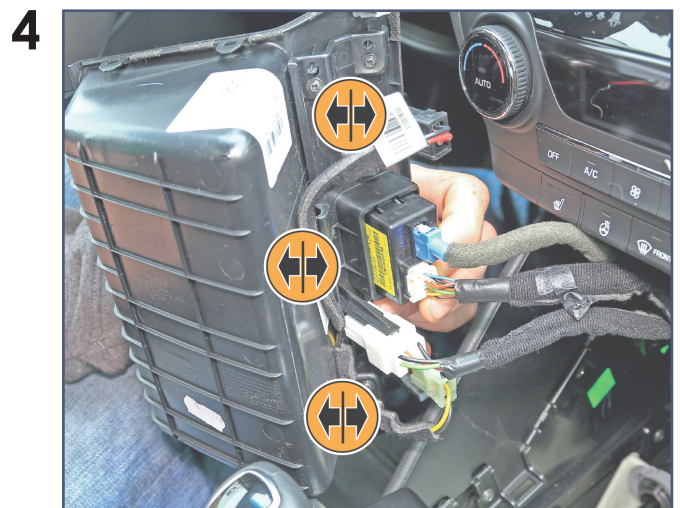
DISCLAIMER

The information provided in this document is subject to change without notice due to manufacturer changes and/or improvements to the product/s. This instruction manual is based on documented data and research. The manufacturer of this product cannot be held responsible for any changes made to the vehicle by the manufacturer or damages that may occur through the installation of this product in accordance with the steps outlined herein.

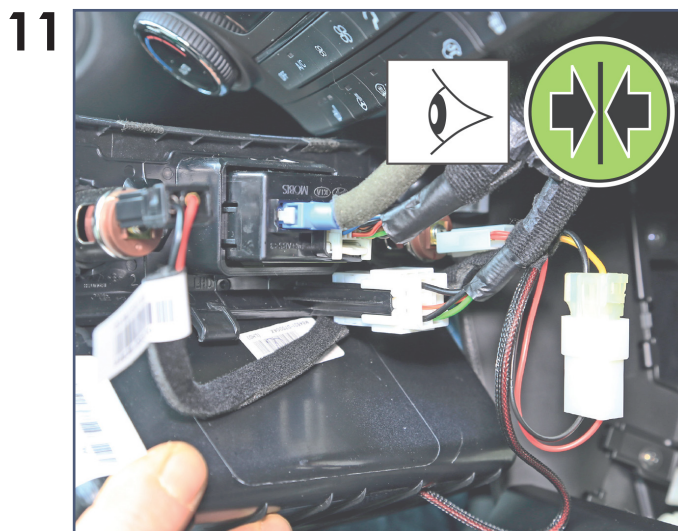
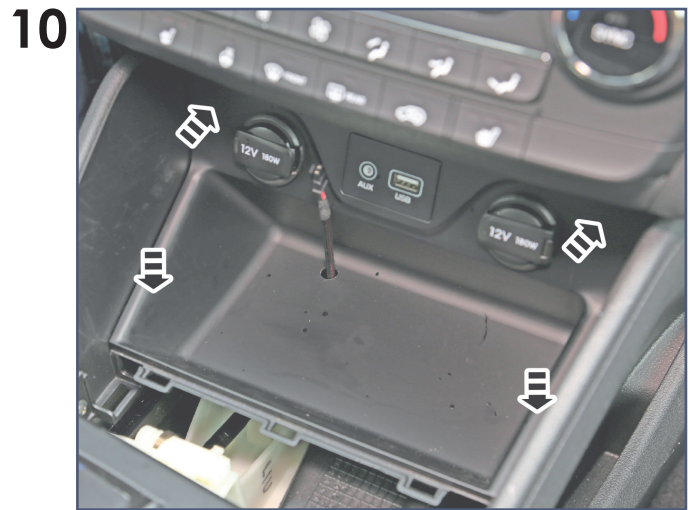
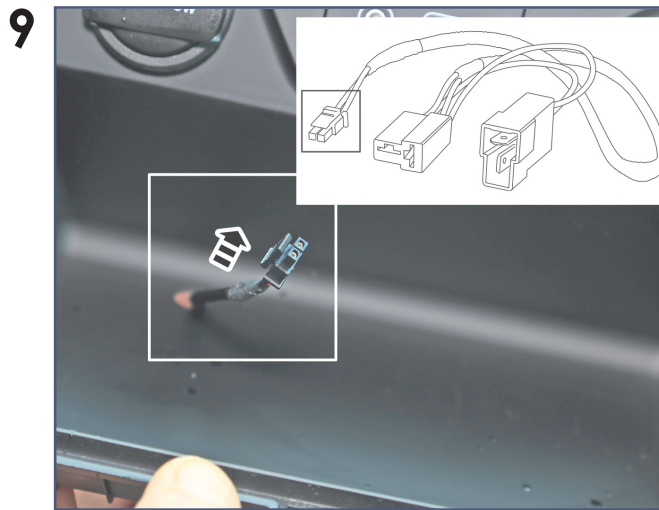
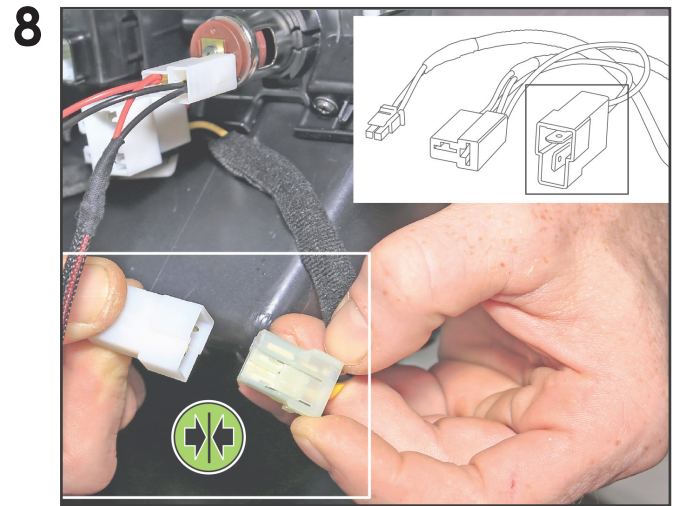
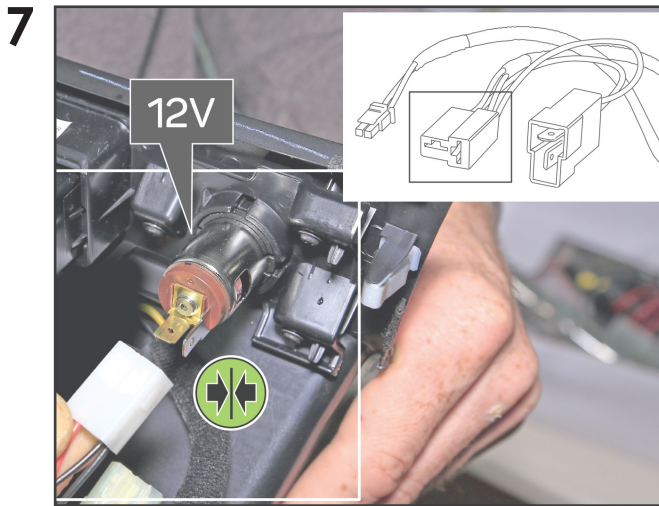
PRIOR TO INSTALLATION

Read the manual prior to installation. Technical knowledge is necessary for installation. The place of installation must be free of moisture and away from heat sources. Please ensure that the correct tools are using during the installation to avoid damage to the vehicle or product. Connects2 can not be held responsible for the installation of this product.

INSTALLATION GUIDE



INSTALLATION GUIDE

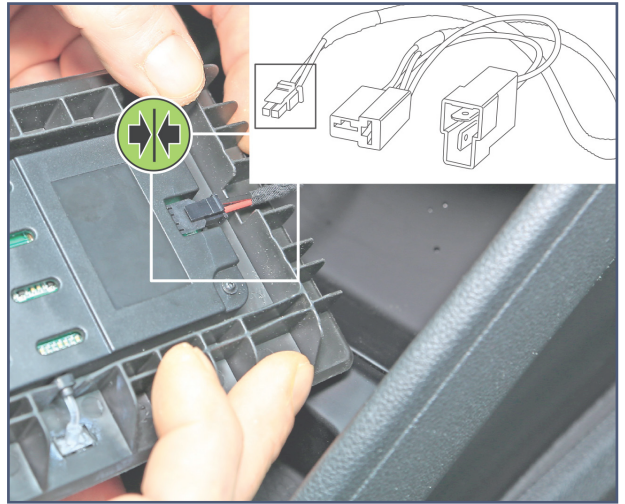


INSTALLATION GUIDE

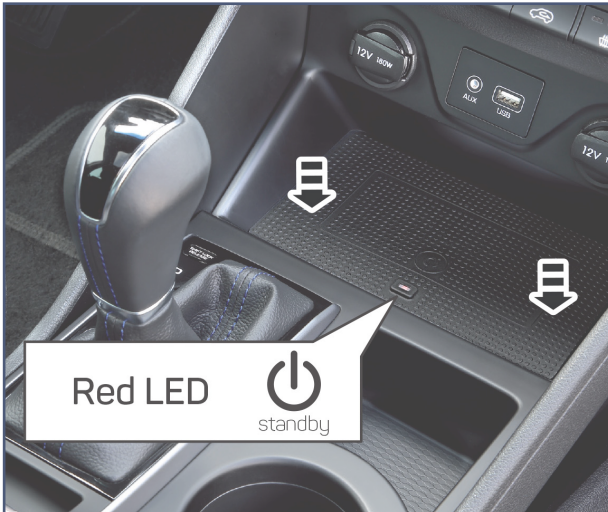
13



14



15



16

