

USER MANUAL

NOVA

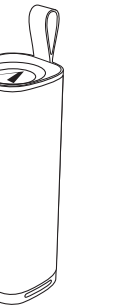


ARCSOUND



Thank you for purchasing an Arcsound product!

To ensure the best experience, please take a moment to read through this product manual carefully before use. Pay close attention to all warnings and follow the instructions provided. Keep the manual in a safe and easily accessible location for future reference.



NOVA

SAFETY INFORMATION

For your safety and to ensure optimal performance, please observe the following precautions:

Battery Lifespan Protection:

To maintain the battery's health, ensure that you fully charge the NOVA at least once every 3 months. Keep in mind that battery life may vary based on usage patterns and environmental factors.

IPX6 Rating – Waterproof and Dustproof:

The NOVA is rated IPX6 for water and dust resistance, meaning it can withstand 100 liters of water sprayed onto it for 3 minutes at a pressure of 100 kPa.

Liquid Exposure Warning:

Never expose the NOVA to liquids while it's connected to a cable. Additionally, avoid getting the speaker wet while charging, as this could result in permanent damage to both the speaker and its power source.



NOVA

Impact of Chemicals and Saltwater:

Exposure to chemicals and salt from pool or ocean water can weaken the waterproof seals and damage the connector surface over time. Always rinse the NOVA with fresh water after exposure to these elements to prevent damage.

Charging After Liquid Exposure:

If the NOVA has been exposed to liquid, allow it to dry completely and ensure it is clean before charging. Charging while the speaker is wet could cause irreversible damage.

External Adapter Compatibility:

When using an external adapter, ensure that the output voltage and current do not exceed 5V/3A to avoid damaging the speaker.



CAUTION
RISK OF ELECTRIC SHOCK
DO NOT OPEN



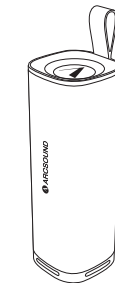
RoHS
COMPLIANT

CE



NOVA

WHAT'S INCLUDED



Bluetooth speaker



Quick start manual

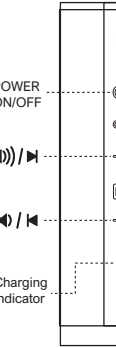


USB-C charging cable



NOVA

CONTROLS



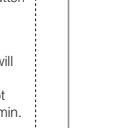
- The default volume is set to 30% when the speaker is turned on.
- To skip to the next or previous song, press and hold the **+** or **-** button.
- Press and hold the **Play/Pause** button to disconnect Bluetooth.
- The speaker will automatically power off if not used for +20 min.



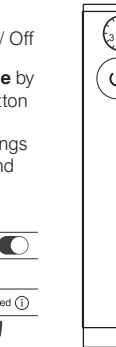
NOVA

BLUETOOTH FUNCTION

- 1 Hold the Button for 3 Seconds to Power On / Off
- 2 Choose **Bluetooth mode** by pressing the On / Off button
- 3 Open the Bluetooth settings on your mobile device and select **"NOVA"**



< Settings Bluetooth
Bluetooth ☐
DEVICES
NOVA Connected
Now Discoverable



NOVA

SPEAKER PHONE

NOVA features a built-in microphone, hands-free solution. Thanks to the noise and echo cancelling function, you can now take crystal clear conference calls.



Button functions in Bluetooth mode

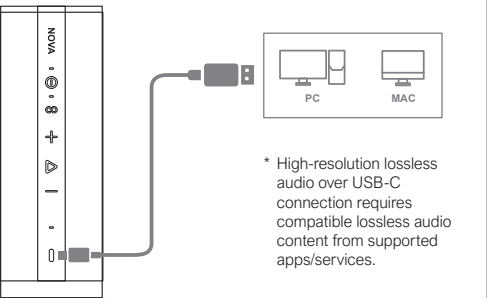
Status	
Incoming call	Press to answer an incoming call.
During a call	Press to end the current call.
Call back	Double-press to call back.



NOVA

PC/MAC CONNECTION

DAC function: Experience High-resolution lossless audio over USB-C connection*



* High-resolution lossless audio over USB-C connection requires compatible lossless audio content from supported apps/services.



PC/MAC CONNECTION

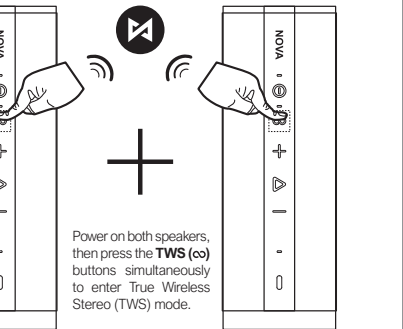
USB-C lossless audio quality
Experience high-resolution, lossless audio by connecting your NOVA speaker to your laptop or other compatible devices using the USB-C cable.

- 1 Use the USB-C cable to connect your device and the NOVA speaker.
- 2 Press and hold the power button to turn NOVA on.
(To disconnect Bluetooth, press and hold the play/pause button).
- 3 Open the settings on your device, select the speaker, and enable it for audio output.



TRUE WIRELESS STEREO

Pair 2 Arcsound NOVA speakers for an enhanced audio experience.



TRUE WIRELESS STEREO

Note:

- A)** When TWS pairing is successful, the main speaker will flash a blue light, and the secondary speaker will show an orange light. If TWS is disconnected, both speakers will flash blue and emit a voice prompt saying "Bluetooth".
- B)** To disconnect from TWS mode, short press the **TWS** button on either speaker, and a voice prompt will notify you of the disconnection.
- C)** The next time both speakers are used, the TWS pairing will automatically reconnect.

BATTERY INFO

When the speaker's battery is low, it will issue a voice prompt, and the volume will automatically decrease. Charge the speaker with the included USB-C power cable.



LED INDICATION

Status	LED indication
Working mode	Blue light glowing
Pairing mode	Blue light blinking
Charging	Red light glowing
Fully charged	Red light stop glowing
TWS pairing mode	Orange light blinking
TWS paired main	Blue light glowing
TWS paired second	Orange light glowing



SPECIFICATIONS

Product model	NOVA
Drivers	Woofer: 48x90mm - 1pc Tweeter: 1.5" (38mm) - 1pc
Bass enhancers	Passive Radiators (55mm) - 2pcs
Bluetooth version (chip)	MV5.3 (MV BP1032A1)
Output	30W (20W + 10W)
Frequency response	70Hz - 20kHz
S/N (signal to noise ratio)	75dB
Battery type	Li-ion battery 3.7V 4500mAh 16.65Wh
Battery charging time	3 hours (5V/2A)
Playing time	Up to 12 hours*
Cabel type	USB-C charging cable

* Dependent on volume and audio content



SPECIFICATIONS

Cabel length	1m
Bluetooth profile	A2DP 1.3, AVRCP 1.6, HFP 1.6
BT transmitter freq. range	2402 MHz - 2480 MHz
BT transmitter power	+8dBm(EIRP)
BT transmitter modulation	GFSK, π/4 DQPSK, 8DPSK
Functions	BT / TWS / Handsfree / Support DAC function
Product size (WxHxD)	76x215x76mm
Net weight	657g
Packaging size (WxHxD)	78x242x78mm
Gross weight	755g
Operation temperature	MAX 45°C



The Bluetooth® word mark and logos are registered trademarks owned by Bluetooth SIG, Inc. and any use of such marks by Winn Scandinavia is under license. Other trademarks and trade names are those of their respective owners.



Arcsound is a trademark by Winn Scandinavia AB
Winn Scandinavia AB | Idrottsvägen 37, 70232 Örebro, Sweden
www.winns Scandinavia.com

Winn Scandinavia AB reserves for possible typos, factual or numeric errors that may have been printed on any material or other included accessories.

